

**VIBEHYR**

# The Architecture of Classroom **Reality**


Neuroscience, Assumption, and the Future of Education

[vibehyr.com/educators](http://vibehyr.com/educators)

# The Classroom is an Echo

The reality you experience in your classroom today is a delayed projection of the assumptions you held yesterday. To change the output, you must first change the input.

Past Assumptions



Present Classroom Reality



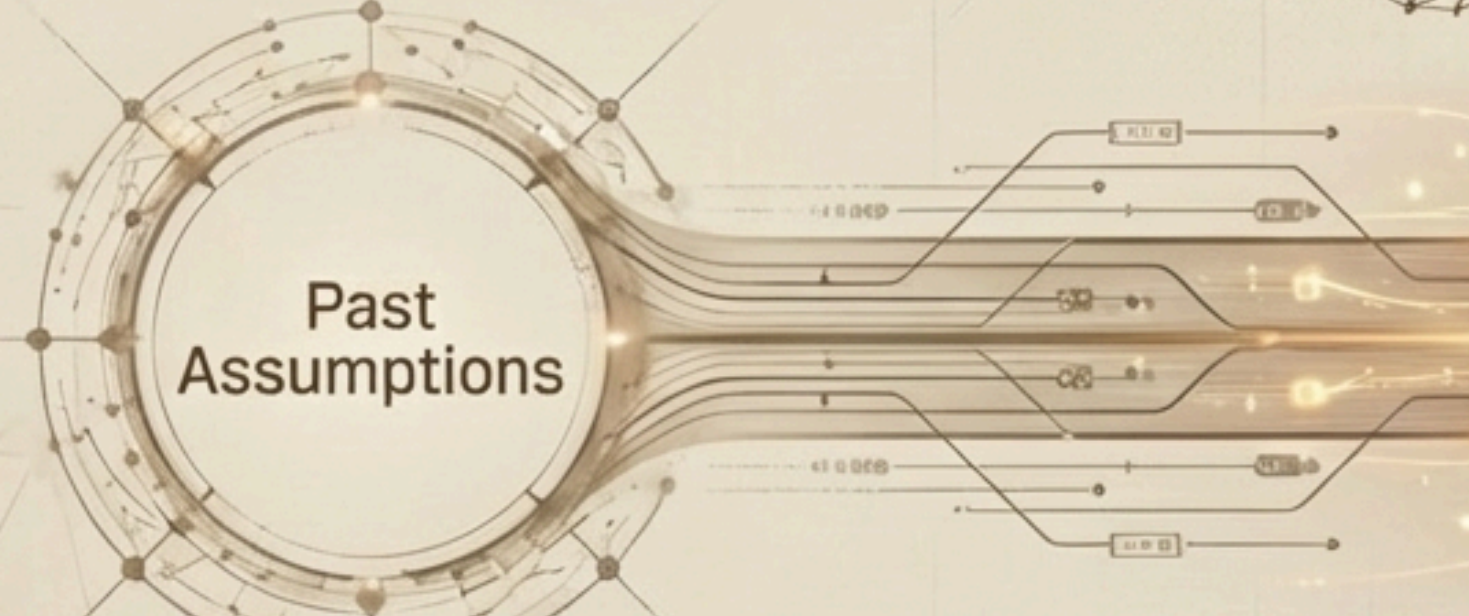
**Shape the reality before you teach.**

# The Science of Expectation

## The 1968 Rosenthal & Jacobson Study

Randomly assigned late bloomers saw massive IQ spikes purely based on teacher expectation.

Past Assumptions



When expectations create reality, your baseline assumptions become your most powerful pedagogical tool.

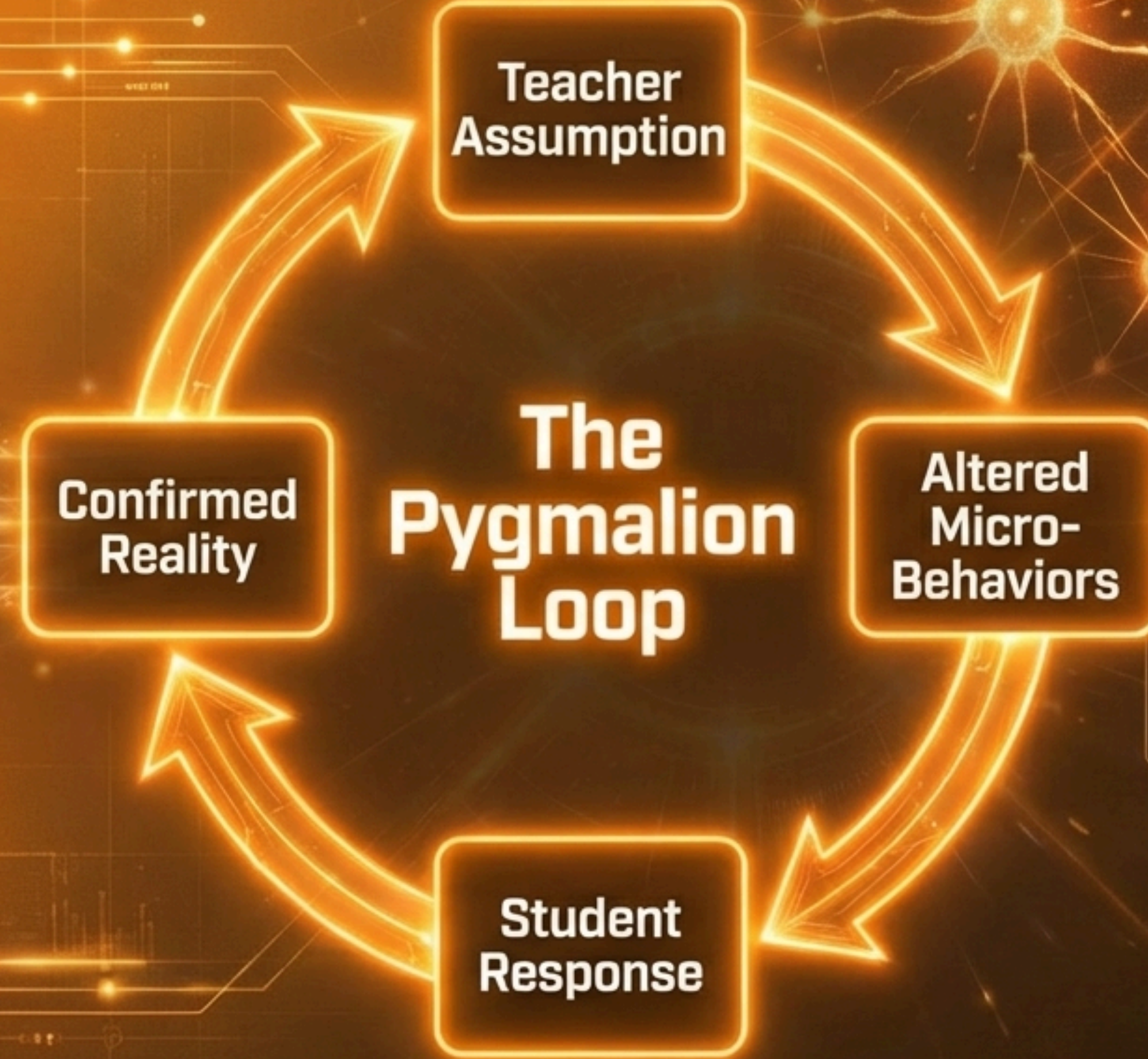
Confirmed Reality

The Pygmalion Loop

Teacher Assumption

Altered Micro-Behaviors

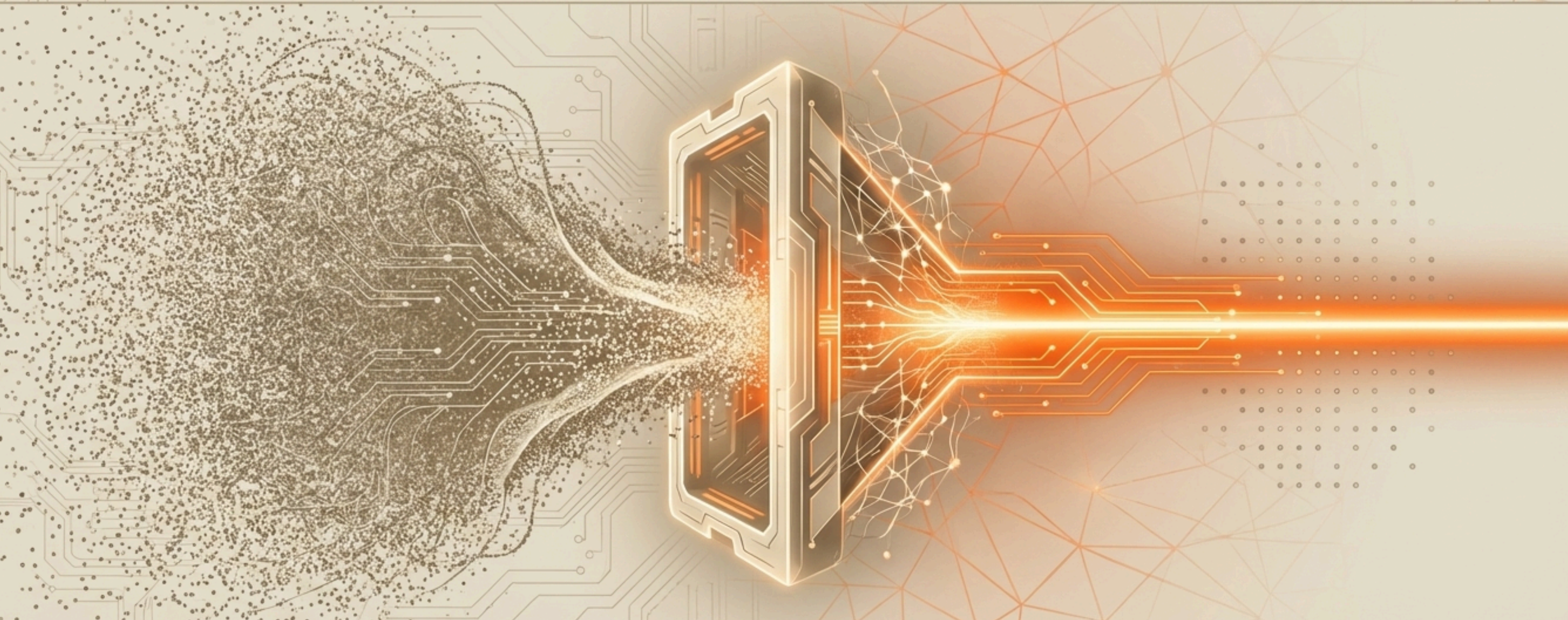
Student Response



# 11 Million vs. 50 Bits

Every second, your brain receives 11 million bits of sensory data.  
You only process 50 bits in your conscious awareness.

*Who decides what gets through the noise of the classroom?*



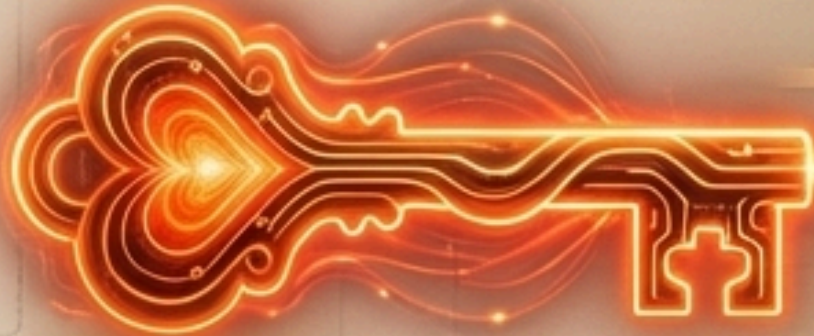
# Programming the Gatekeeper

The Reticular Activating System (RAS) filters external reality based on your internal instructions.

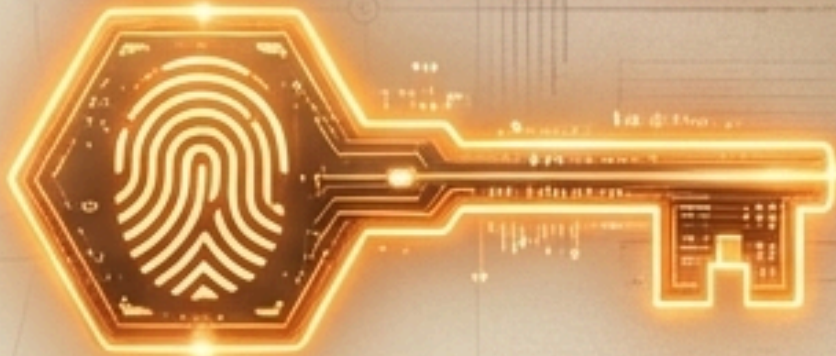
Key 1: Repetition  
(Consistent focus)



Key 2: Emotion  
(The weight of the feeling)



Key 3: Identity  
(Who you believe you are as an educator)



# The Assumption Matrix

Neutral Evidence: A student is highly disengaged.

**Default Mindset**

**Internal Assumption:**  
They don't care. / I'm failing.

**RAS Output:**  
Highlights disrespect; triggers  
defensive behavior.

**Architect Mindset**

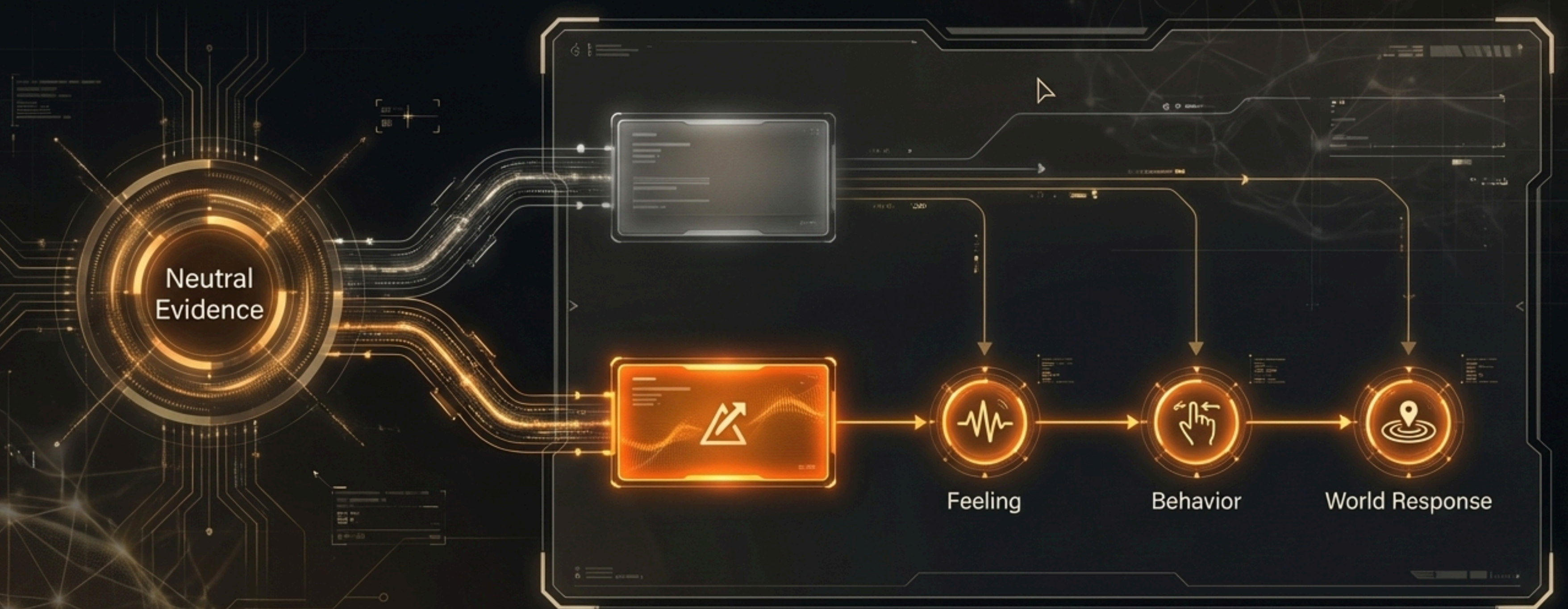
**Internal Assumption:**  
They are processing. / This is a pivot.

**RAS Output:**  
Highlights connection opportunities;  
triggers empathetic engagement.

# Enter the Assumption Lab

A scenario-based simulator designed exclusively for educators to train their RAS.

Observe neutral classroom evidence → Select your assumption → Watch the neurological and behavioral chain reaction unfold in real-time.



# Rewiring the Foundation

**Insight:** The State Akin to Sleep (SATS).

**Mechanism:** Utilizing the 5–10 minute window before sleep to bypass the prefrontal cortex's critical faculty.

**Action:** Rehearse the feeling of a deeply connected classroom. Let the nervous system accept it as truth.

Beta Waves (Awake/Alert)

Theta Waves (4–8 Hz)



# The Complete Operating System for Educators

**Programming the Gatekeeper**  
Neuroscience of Focus

**The Assumption Lab**  
Interactive Training

**SATS Mastery**  
Subconscious Reprogramming

**Daily Revision Journal**  
Rewriting the narrative

**Vibe  
Hyr**

**VIBEHYR**

# **Raise Your Reality**

*“Assume the feeling of your wish fulfilled.”*

Join the vanguard of conscious educators.

[vibehyr.com/educators](https://vibehyr.com/educators)